



## CHARACTERISTICS & FUNCTIONALITIES

**LACTOSE**  
MONOHYDRATE

**350**  
**MESH**

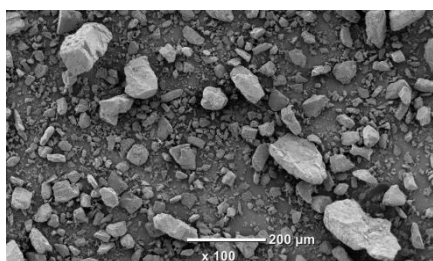


### DESCRIPTION



**ARMOR PHARMA™ lactose monohydrate 350M** is a fine milled powder of  $\alpha$ -lactose monohydrate. This lactose is produced in ARMOR PHARMA™ dedicated & state-of-the-art facility in Loudéac (France). Manufactured under EXCIPACT™ GMP standards, it conforms to Ph.Eur, USP-NF and JP lactose monohydrate monographs.

SEM (Scanning Electron Microscopy)



#### KEY BENEFITS

- Compressibility
- Blending properties
- Storage stability

#### APPLICATIONS

- Wet granulation
- Dry granulation
- Blends/Premixes/Triturations
- Fermentation processes

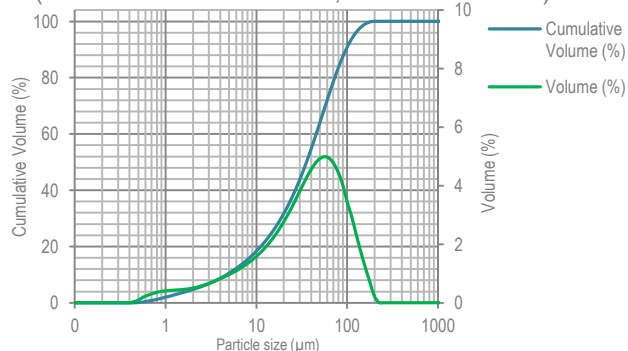


### PARTICLE SIZE DISTRIBUTION (PSD)

PSD (Air jet sieve)	Specifications (%)
% < 45 $\mu\text{m}$	$\geq 60$
% < 100 $\mu\text{m}$	$\geq 96$
% < 250 $\mu\text{m}$	100

Due to the presence of fine milled particles, this  $\alpha$ -lactose monohydrate combines good compaction and blending properties.

PSD (Malvern Laser diffraction, indicative values)

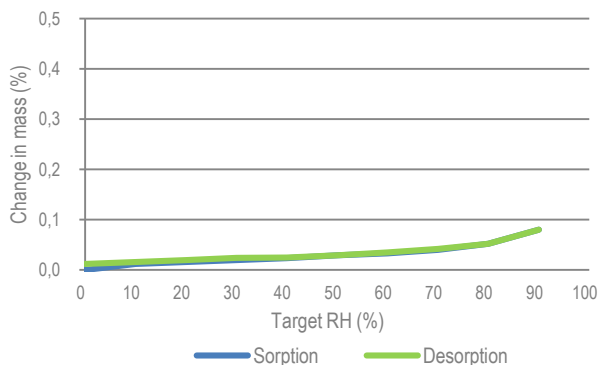


$x_{10}$  : 5  $\mu\text{m}$      $x_{50}$  : 36  $\mu\text{m}$      $x_{90}$  : 97  $\mu\text{m}$



### MOISTURE SORPTION

DVS (Dynamic Vapor Sorption)



The hygroscopicity of  $\alpha$ -lactose monohydrate is very low which enables high stability both in storage as well as in formulations



### FLOWABILITY

- POURED DENSITY: 0.52 g/mL
- TAPPED DENSITY: 0.79 g/mL
- CARR'S INDEX: 34 %
- HAUSNER RATIO: 1.52

## How would you like your lactose?

The data contained in this document are for information purposes only and are non-contractual.

For more information, contact us: [technical.support@armor-pharma.com](mailto:technical.support@armor-pharma.com)