

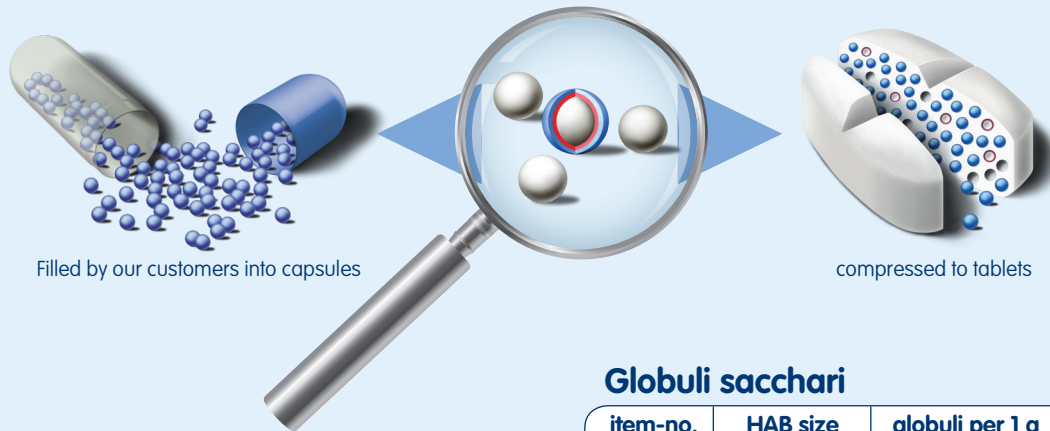
Neutral Pellets (sugar spheres)

The available standard sizes are:

item-no.	mesh ASTM	diameter in µm
08001	170 - 100	90 - 150
08013	100 - 80	150 - 180
08023	80 - 70	180 - 212
08025	80 - 60	180 - 250
08033	70 - 60	212 - 250
08035	70 - 50	212 - 300
08043	60 - 50	250 - 300
08050	50 - 45	300 - 355
08051	60 - 45	250 - 355
08052	50 - 40	300 - 425
08053	60 - 40	250 - 425
08062	45 - 35	355 - 500
08063	45 - 40	355 - 425
08065	50 - 35	300 - 500
08073	40 - 35	425 - 500
08130	35 - 30	500 - 600
08150	35 - 25	500 - 710
08230	30 - 25	600 - 710
08250	30 - 20	600 - 850
08330	25 - 20	710 - 850
08350	25 - 18	710 - 1,000
08430	20 - 18	850 - 1,000
08450	20 - 16	850 - 1,180
08530	18 - 16	1,000 - 1,180
08630	16 - 14	1,180 - 1,400
08643	16 - 12	1,180 - 1,700
08653	14 - 12	1,400 - 1,700
08663	12 - 10	1,700 - 2,000

SUGAR SPHERES ...

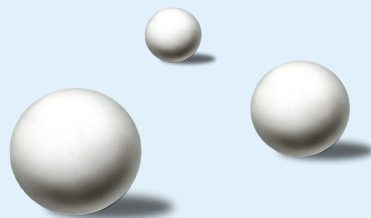
... carrier for your sustained-release formulation



Filled by our customers into capsules

compressed to tablets

GLOBULI SACCHARI ...



... basis for your
homoeopathic medicine

Globuli sacchari

item-no.	HAB size	globuli per 1 g
08710	1	470 - 530
08720	2	220 - 280
08725	-	200 - 333
08730	3	110 - 130
08731	3	110 - 130
08740	4	70 - 90
08750	5	40 - 50
08760	6	22 - 28
08765	-	appr. 20
08770	7	appr. 10
08780	8	appr. 5
08790	9	appr. 3
08795	10	appr. 2

Hanns G. Werner GmbH + Co. KG