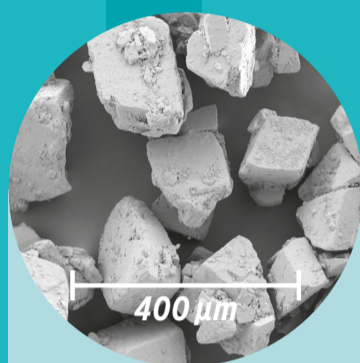


## MEGGLE's alpha-lactose monohydrate qualities for dry powder inhalation

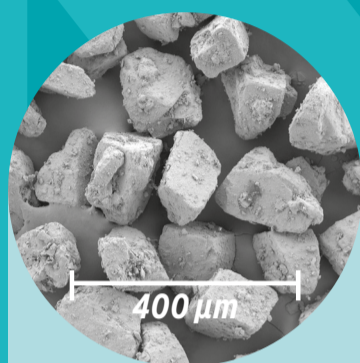
### InhaLac® sieved



**InhaLac® 70**

**Particle size distribution**

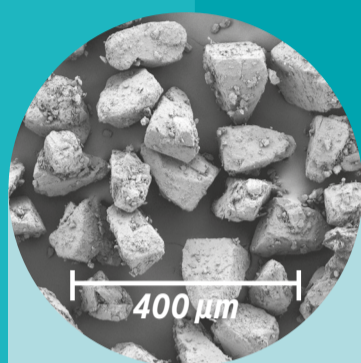
X <sub>10</sub>	110 – 160 µm
X <sub>50</sub>	180 – 250 µm
X <sub>90</sub>	270 – 340 µm
<b>Density</b>	
bulk	0.57 – 0.70 g/ml



**InhaLac® 120**

**Particle size distribution**

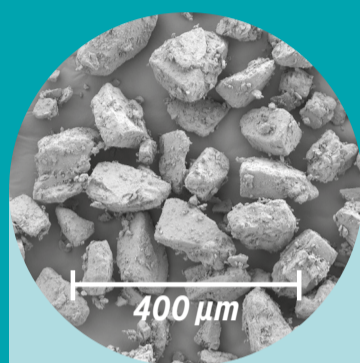
X <sub>10</sub>	70 – 105 µm
X <sub>50</sub>	110 – 155 µm
X <sub>90</sub>	160 – 215 µm
<b>Density</b>	
bulk	0.67 – 0.77 g/ml



**InhaLac® 160**

**Particle size distribution**

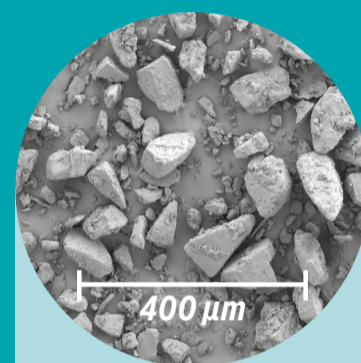
X <sub>10</sub>	55 – 85 µm
X <sub>50</sub>	90 – 120 µm
X <sub>90</sub>	125 – 165 µm
<b>Density</b>	
bulk	0.63 – 0.76 g/ml



**InhaLac® 230**

**Particle size distribution**

X <sub>10</sub>	30 – 60 µm
X <sub>50</sub>	70 – 110 µm
X <sub>90</sub>	110 – 150 µm
<b>Density</b>	
bulk	0.66 – 0.76 g/ml

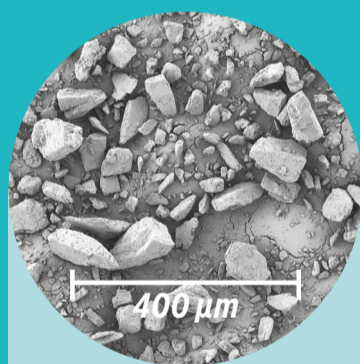


**InhaLac® 251**

**Particle size distribution**

X <sub>10</sub>	7 – 22 µm
X <sub>50</sub>	40 – 70 µm
X <sub>90</sub>	80 – 120 µm
<b>Density</b>	
bulk	0.55 – 0.70 g/ml

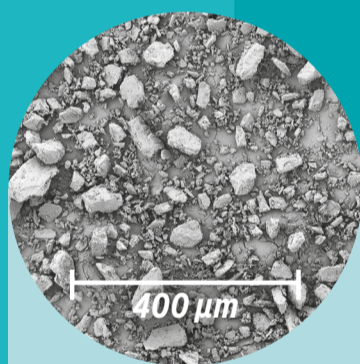
### InhaLac® milled



**InhaLac® 140**

**Particle size distribution**

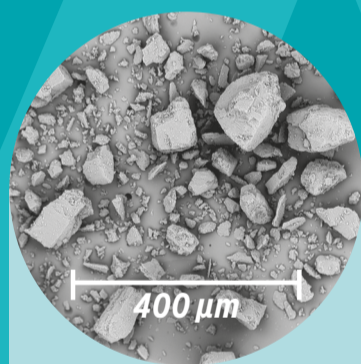
X <sub>10</sub>	3 – 7 µm
X <sub>50</sub>	37 – 61 µm
X <sub>90</sub>	120 – 190 µm



**InhaLac® 150**

**Particle size distribution**

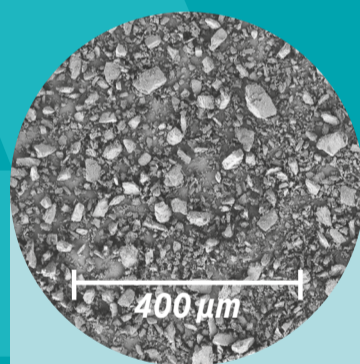
X <sub>10</sub>	1 – 5 µm
X <sub>50</sub>	18 – 30 µm
X <sub>90</sub>	65 – 95 µm



**InhaLac® 180**

**Particle size distribution**

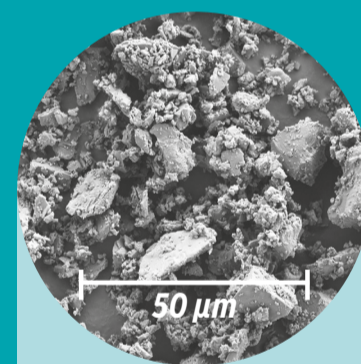
X <sub>10</sub>	5 – 15 µm
X <sub>50</sub>	50 – 100 µm
X <sub>90</sub>	120 – 160 µm



**InhaLac® 300**

**Particle size distribution**

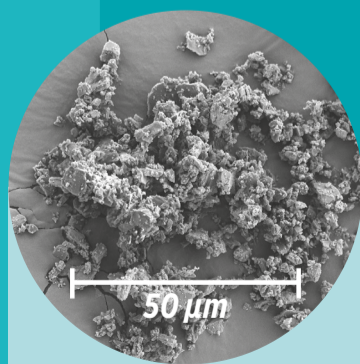
X <sub>10</sub>	2.0 – 3.5 µm
X <sub>50</sub>	14 – 19 µm
X <sub>90</sub>	40 – 56 µm



**InhaLac® 400**

**Particle size distribution**

X <sub>10</sub>	0.8 – 1.6 µm
X <sub>50</sub>	4.0 – 11.0 µm
X <sub>90</sub>	15.0 – 35.0 µm
<b>Density</b>	
bulk	0.25 – 0.40 g/ml



**micronized**

**InhaLac® 500**

**Particle size distribution**

X <sub>50</sub>	≤ 5 µm
X <sub>90</sub>	≤ 10 µm